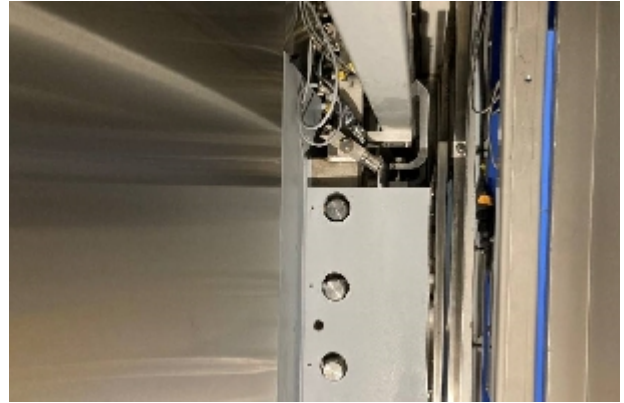


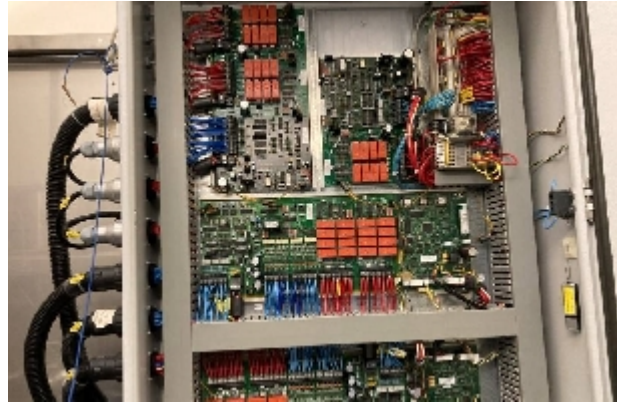


Autoclaves/Sterilizing Ovens/Freeze Dryers GETINGE GEC 900 X1450X1350-2

Images







Product details

Category:	Autoclaves/Sterilizing Ovens/Freeze Dryers
Machine:	GEC 900 X1450X1350-2
Machine code:	IT341
Manufacturer:	GETINGE
Year of construction:	2007

Description



INTIMAC S.R.L.

Via XXV Aprile, 8
21054 Fagnano Olona (VA) - Italia
Tel. +39 0331 1693557
email: inti@intisrl.it

Autoclave Getinge sterilization AB model GEC 900 X1450X1350-2

Dimensions L x B x H: 2600 x 1700 x 2500 mm

Internal dimensions: B 890 x D 1000 x H 1450 mm

Steam: 161 kg

Steam process: Use 3 kg; peak/min. 0.1 kg; 2.7 - 3.0 bar

Water process: use 200 liters; peak/min. 40 liters; 4.0 - 6.0 bar

Cooling water: 2110 litres; peak/min. 150 litres; 2.0-3.0 bar

Air: use 0.5 Nm³; peak/min. 0.2 Nm³; 6.0-8.0 bar

Air process: use 4.8 Nm³; peak/min. 1.5 Nm³; 4.0-6.0 bar

Cooling water return: 2110 litres; peak/min. 150 litres

Drainage: peak/min. 60

Three-phase with 400 Volt voltage; 4.3 kW

Frequency: 50 Hz

Recommended fuse: 25 Ampere

Rated power: 4,3 Kw

Rated current: 8.3 A

Short circuit current: 6 ka

Maximum single load: 7,8 A

Emission of heat:

Loading area: 1.1 Kw

Discharge zone: 1.1 Kw

Service area: 4.5 Kw

Sound level: < 70 dba