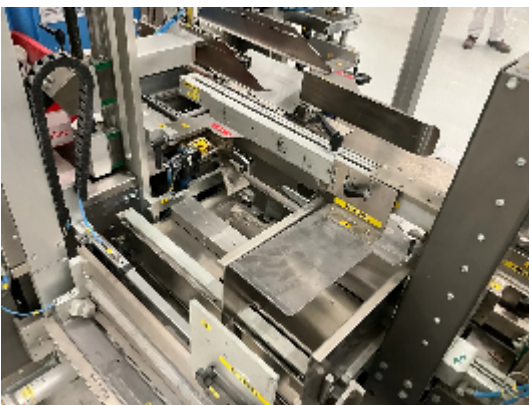
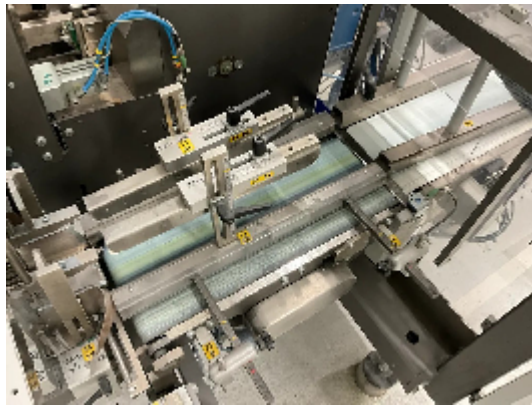
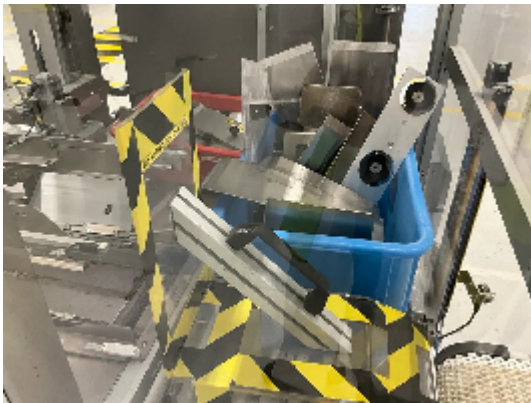
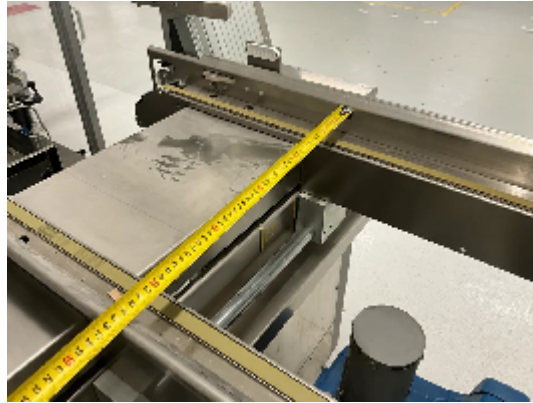




Cartoning Machines/Case packers IMA BFB CP18

Images





Product details

Category:	Cartoning Machines/Case packers
Machine:	CP18
Machine code:	23-1225
Manufacturer:	IMA BFB
Year of construction:	2013

Description



INTIMAC S.R.L.

Via XXV Aprile, 8
21054 Fagnano Olona (VA) - Italia
Tel. +39 0331 1693557
email: inti@intisrl.it

IMA BFB automatic case packer of 2012 made in a way to ensure maximum reliability, great versatility, minimum footprint, with really small dimensions and high production characteristics. A newly designed machine particularly suitable for inserting single shrink-wrapped cartons or pre-glued trays of standardized dimensions..

SECTOR OF USE

Pharmaceutical, chemical, cosmetic, food, dietary, medical devices.

PECULIARITIES:

Electrical system, noise level and accident prevention protections, to European standards. Carton closure with adhesive tape and/or hot melt or vinyl glue application.

Picking and forced suction cup opening arms ensure perfect squaring of the carton in the filling phase. The product is stacked and introduced into the open carton.

The machine proceeds to close the carton flaps and depending on the configuration to close the carton.