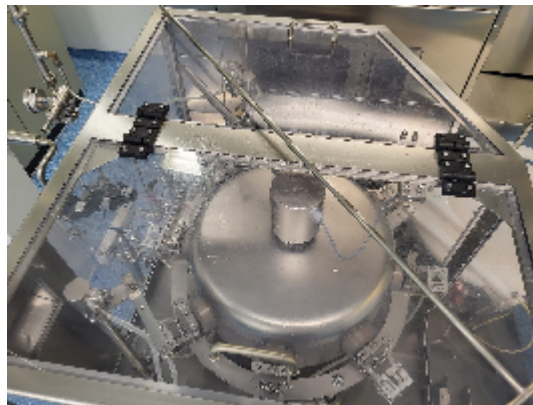




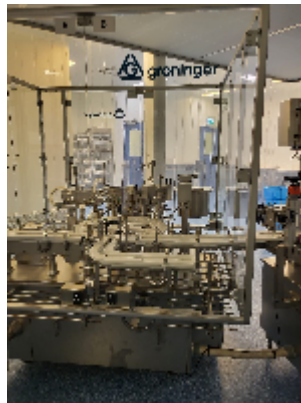
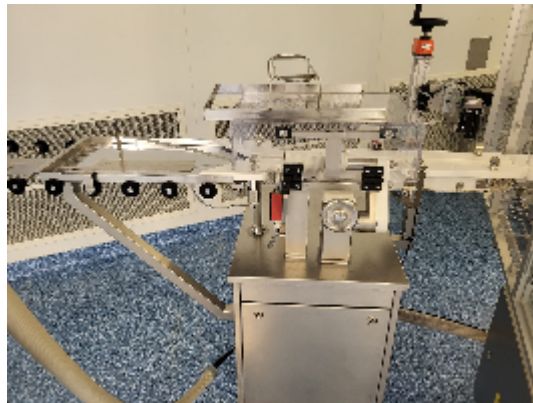
## Complete Lines Steriline Washer + Tunnel Steriline VSH02 + Filler Groninger KFVG251

### Images





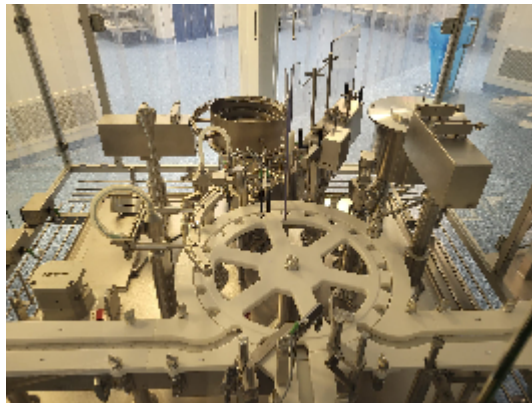
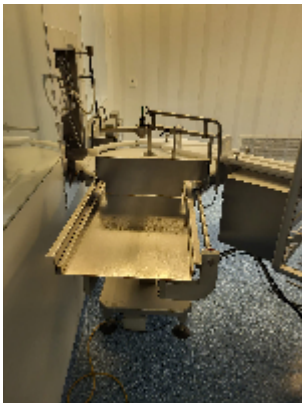
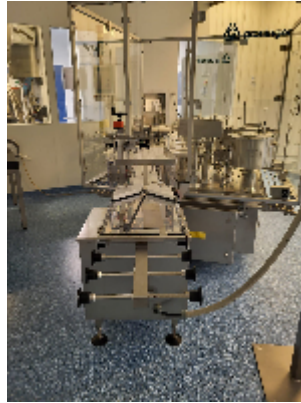
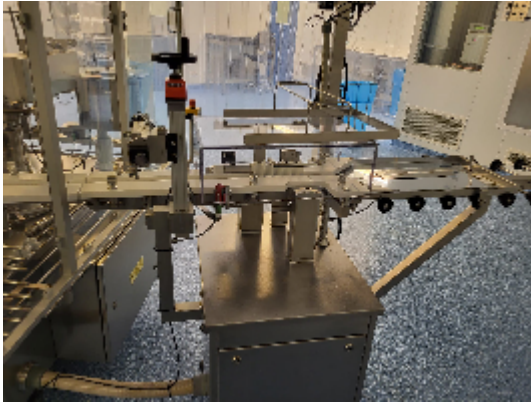
**INTIMAC S.R.L.**  
Via XXV Aprile, 8  
21054 Fagnano Olona (VA) - Italia  
Tel. +39 0331 1693557  
email: inti@intisrl.it





**INTIMAC S.R.L.**

Via XXV Aprile, 8  
 21054 Fagnano Olona (VA) - Italia  
 Tel. +39 0331 1693557  
 email: inti@intisrl.it



Vial size	Sterilizing air temperature °C			Sterilizing air speed ± 0.02 m/s	Convcyer belt speed when running + 3 mm/min
	Min	Setting	Max		
2R	310	315	325	0.85	58
6R	315	320	330	0.05	70
10R	315	320	330	0.85	66
20R	315	320	330	0.85	64
50II	315	320	330	0.05	40





## Product details

<b>Category:</b>	Complete Lines
<b>Machine:</b>	Washer + Tunnel Steriline VSH02 + Filler Groninger KFVG251
<b>Machine code:</b>	23-1123
<b>Manufacturer:</b>	Steriline
<b>Year of construction:</b>	2008

## Description

Description :

- Washer + Tunnel + Filler for R&D scale-up or small production.
- Built date: 2008
- Running Time : 231 Hours Only.
- All documentation available ( Technical – FAT – SAT etc ).

Composed by:

1. Washer Model : Steriline RA-V2 -
2. Sterilizing Tunnel Model : Steriline STC20 -
3. Filler : Groninger. Model KFVG 251. – .
4. Available Formats : 2R,6R,10R,20R and 50H