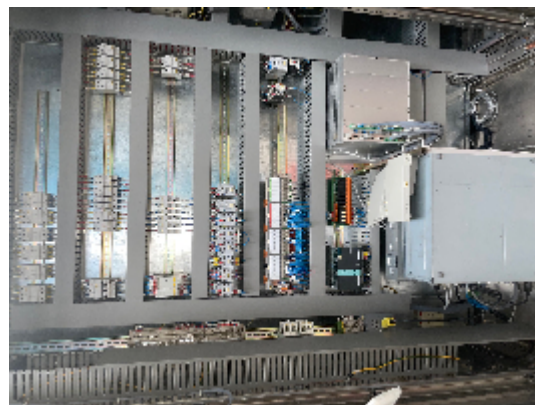




Aseptic Filling and Closing Machines IMA F2000

Images





Product details

Category:	Aseptic Filling and Closing Machines
Machine:	F2000
Machine code:	22F250
Manufacturer:	IMA
Year of construction:	n/a

Description

The F2000 is a machine with linear transport with intermittent motion, for distributing liquid solutions in cylindrical containers. The machine is particularly suitable for the distribution of aseptic products, as it can operate in both conventional clean rooms and isotechnics.

The bottles are fed by means of an upstream feeding belt that introduces the bottles into the infeed starwheel. Once the bottles have reached the infeed starwheel, they are positioned on the toothed belt on which the antistatic polyethylene moulded plugs and polyethylene contrast guides for positive linear transport of the containers are inserted using a 'quick-fit' system.

The dosing of the bottles takes place during the conveyor movement, the filling system is carried out by an external unit with 8 Felxicon peristaltic pumps, which performs the filling of the bottles by synchronising with their movement.

Once the bottles have reached the outfeed star, they are positioned on an in-line or 90° exit conveyor with independent drive controlled by an inverter.

The machine is equipped with a rejection station on a motorised belt with application of suction cups and vacuum on the exit starwheel for the bottles AND with a device for checking the actual rejection of the container.