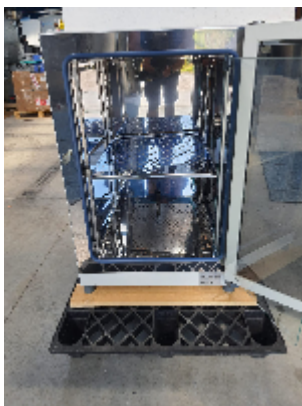
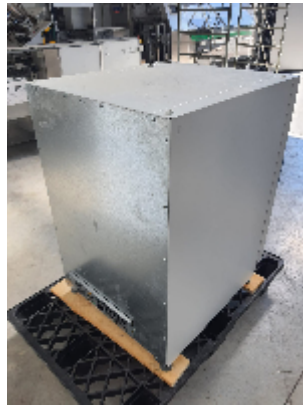




## Incubator Thermo Scientific IGS 180

### Images



### Product details

<b>Category:</b>	Incubator
<b>Machine:</b>	IGS 180
<b>Machine code:</b>	22F289
<b>Manufacturer:</b>	Thermo Scientific
<b>Year of construction:</b>	2011

### Description



**INTIMAC S.R.L.**

Via XXV Aprile, 8  
21054 Fagnano Olona (VA) - Italia  
Tel. +39 0331 1693557  
email: inti@intisrl.it

---

## Thermo Scientific Heratherm IGS180 Incubator

The Thermo Scientific Heratherm IGS180 Incubator utilizes gravity convection for gentle air flow and minimal sample drying. This incubator provides a temperature range from ambient +5°C to 75°C with a uniformity of  $\pm 0.6^\circ\text{C}$  and stability of  $\pm 0.2^\circ\text{C}$ . With an intuitive interface and large vacuum fluorescent read-out, the Heratherm incubator is incredibly easy-to-use and user friendly. Corrosion-resistant stainless steel interior and internal glass door allow for long life and ease of viewing samples.

The Thermo Heratherm incubator is designed for complete sample safety, including applications in pharmaceutical, medical, food, and research laboratories.

### Thermo Scientific Heratherm IGS180 Incubator Specifications

Temperature Range Ambient +5°C to 75°C

Temperature Uniformity  $\pm 0.6^\circ\text{C}$

Temperature Stability  $\pm 0.2^\circ\text{C}$

Volume 194 L (6.9 cu ft)

Interior Dimensions (D x W x H) 58.9 x 46.4 x 70.8 cm (23.2 x 18.3 x 27.9 in)

Exterior Dimensions (L x W x H) 73.8 x 64 x 92 cm (29.1 x 25.2 x 36.2 in)

Electrical Requirements 120V, 60Hz, 6A, 720W