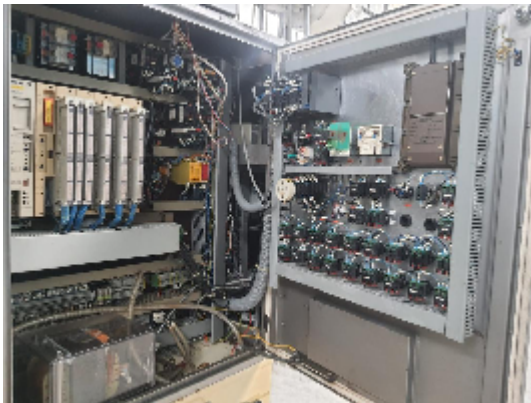
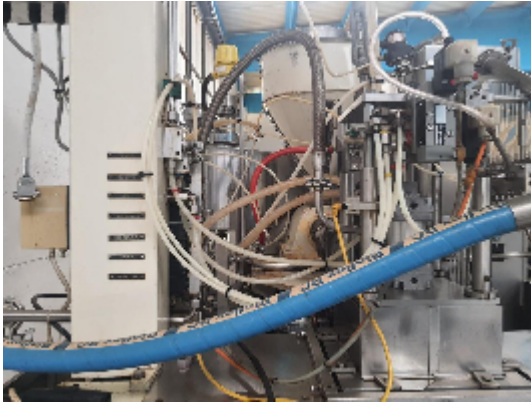




Images





Product details

Category:	Bottelpack
Machine:	
Machine code:	22F241
Manufacturer:	ROMMELAG
Year of construction:	n/a

Description



Rommelag Type 3012 BFS was last operational and used to fill sterile pharmaceutical product into unit dose vials

- 1, 2, & 4ml Unit Dose Vials at 3300 UDV's per hour.

Additionally, the machine has the tooling available to produce 2.5, 5 & 10ml ampoules

Included:

- Moulds will be supplied with the machine
- Machine conveyors
- NEU Engineering Polyloader.
- Virgin Gran Vacuum Pump.
- Hydraulik 321-1.31-00-3 Hydraulic Pack.
- Vacuum Pump Assembly.
- Operational and Maintenance documentation.

Dimensions & Weight:

-Weight: approx. 3500kgs -Length: approx. 2130mm -Width: approx. 1370mm -Height: approx. 2700mm

Emissions:

-Noise: 78 dB(A)

Services Specifications:

Electrical:

- Enclosure type: IP54
- Supply Voltage: 400V 3 Phase V+N, PE -Frequency: 50 HZ
- Current: 65A
- Control Voltage: 24V DC
- Main Fuse: 80A
- Rated Power Consumption: 30 kWh

Pneumatic:

- Air Pressure: 8 bar
- Max. Consumption: 250 l/min

Hydraulic:

- Pressure: max. 100 bar
- Hydraulic motor: 7.5 kW

Miscellaneous Machine Data:

- Extruder Ø: 35 mm (24 D)
- Extruder motor: 27kW
- Plastic granulate used: LDPE
- Plasticizing capacity for plastic granulate: 35 kg/h

Ambient Conditions:

- Temperature (machine):
 - Storage temperature: 15-30 °C
 - Operating temperature: 15-30 °C
- Air moisture: 40-80%