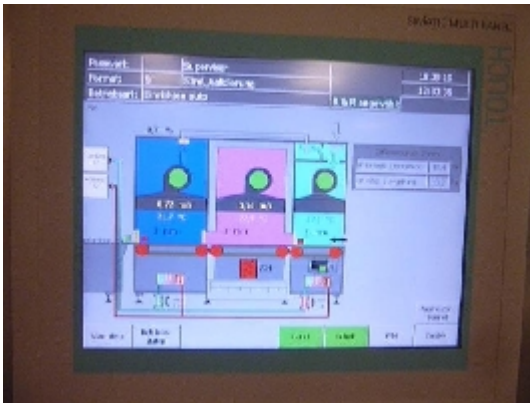




Aseptic Filling and Closing Machines Inova VFVM231

Images







Product details

Category:	Sold
Machine:	VFVM231
Machine code:	IT366
Manufacturer:	Inova
Year of construction:	2007

Description



INTIMAC S.R.L.

Via XXV Aprile, 8
21054 Fagnano Olona (VA) - Italia
Tel. +39 0331 1693557
email: inti@intisrl.it

Complete line for sterile vials composed of:

Washing machine

Manufacturer INOVA

Type VWM-C

Year 2007

Electric 230/400/50Hz/29A

sterile tunnel

Manufacturer INOVA

Type SHT-C

Year 2007

Vial filling & closing machine

Manufacturer INOVA

Type VFVM231

Year 2007

Electric 230/400V/50Hz/ 20A (protection)/3A(power)

Details:

pre/filling/after gassing station

Capacity for vials R2/R6/R8 approx. 1500V/h

Capacity for vials R10 approx. 1300 V/h

Capacity for vialsR50 approx. 400V/h