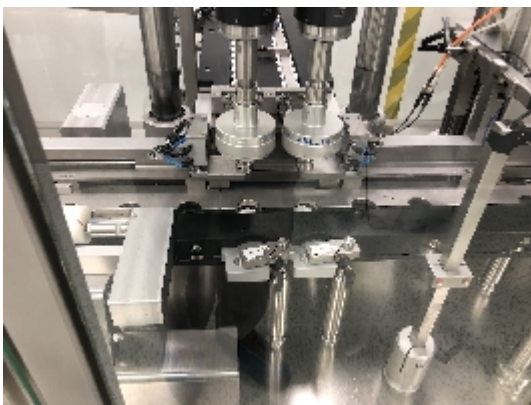
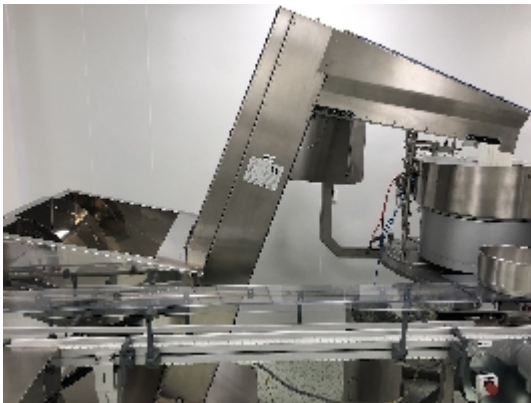




Capping and Closing Machines Rudolf Deckert AVR

Images





Product details

Category:	Capping and Closing Machines
Machine:	AVR
Machine code:	IT209 20-0015
Manufacturer:	Rudolf Deckert
Year of construction:	2012

Description

AVR linear Capper

AVR linear Capper is designed for fast repeatable changeover and maximum ergonomics.

The producer design the machine so that as few format parts are needed as possible.

We reduce changeover time and increase operating efficiency!

Our linear rake Capping Machine have up to 2 capping stations. Screw caps can be used on our machine.

The linear capper is mechanically driven with an under-frame integrated control cabinet.

The bottles are fed in a single lane to the machine where a bottle divider automatically separates them to the required distance.

The divider unit will not need any changeover part as the process is done via the HMI. Sorting and feeding devices feed the caps to the capping heads where the caps are applied onto the bottle orifices.

These capping heads can be torque controlled using either servo or clutches.

Our sorting and feeding devices can be designed to be able to run different sizes of caps on the machine without having to change over.

An induction sealing unit can also be integrated to the machine which is normally placed between a capping and re-torqueing station.

The height adjustment of the capping and retorquing stations is automatically controlled by the recipe integrated into the HMI.